

## Orbital welding (welding power sources)

**AXXAIR**

INNOVATIVE ORBITAL SOLUTIONS

Our range of AXXAIR power supplies has been designed to be user friendly and intuitive. Our step by step design allows, even beginner, to easily generate programs after only a short learning period, while very advanced functions are available to advance users looking to customize their programs.

A particular attention has been paid to using as much as possible standard industrial components for their reliability and availability. The facilitated access to parts makes our power sources robust and easy for maintenance.

The combination of an easy to use and sturdy package allows you to be competitive and makes this range the best choice for all your current or future projects.



The electronics in charge of piloting the rotors of the welding heads is specifically designed to support various motor type, CD, brushless, stepping motors but also encoders or tachometers, making these power supply one of the most versatile on the market today.

Because our power supply can control most type of motors, we are able to control not only our products but also many of the other products available. Using a 32-pin « quick fit » connector we are able to design several cable adaptor to connect most products available today on our power supply. This great feature allows our customers to use our power supply as a one fits all, reducing the cost of ownership.

### FLEXIBILITY, PRODUCTIVITY

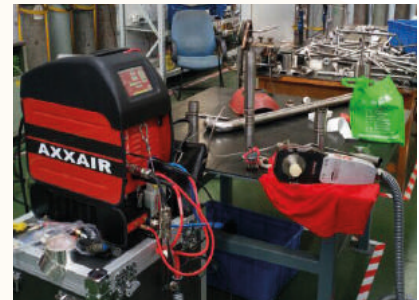
Our latest touch screen interface allows us to make available even the most advanced features in a user friendly and intuitive way.

### QUALITY AND REPEATABILITY

Part of the conviviality of our power supply comes from the innovative way we register a program. First you will create a configuration that includes the model and type of welding head, the tube diameter, the tube wall thickness and the tube material. Then within this configuration you will add your programs, up to 10 per configuration. This makes it really easy to retrieve and select a program even if it was created months ago.

### PORTABILITY

Our power supply are among the easiest to carry on site or move around the workshop, however if you want to be able to move effortlessly the gas cylinder together with the power supply we designed a very convenient trolley.



Please do not hesitate to contact us for all enquiries relating to orbital welding power sources.

We will be glad to share our know-how with you and to devise a solution that best meets your needs!



Join **experience**



# SAXX-200



## Fully-assured gas management

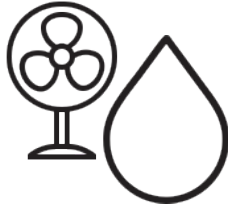
2 separate gas lines, free choice of inerting gas flow management



Gas flow control and flow alarms

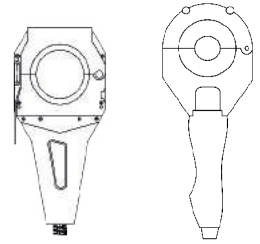
Display of the actual flow rate right on the screen

## Air Cooled or Water cooled



## Compatible with most closed head on the market:

AMI, Polysoude, ESAB, Orbitec and Orbitalum



## Interface 5.7 colour touch screen + WiFi

13 languages, possibility of remote control by smartphone or tablet



## Data acquisition

Records the last 999 welds on the USB stick

Integrated WeldReport (formatting of the data and presenting of the instructions in the form of DMOS)

## Integrated printer:

Printing program and actual parameters

## PPM sensor

Capable of managing thresholds and sending an electrical pulse to the power source in order to start the welding. This ensures a consistently and properly purged welding area

Records PPM variation during the weld



## Axis for added metal

Possibility of using Step mode

## Removable water colling

Can be separated without tools and makes the power source extremely portable

Cooling capacity 700W, flow mini alarm



## USB port on front panel

200 programs per USB stick (possible to use several sticks)

Remote update possible



# SAXX-200

## AXXAIR welding power source

**AXXAIR**  
INNOVATIVE ORBITAL SOLUTIONS

You can now order your SAXX-200 power source with **the options you need.**

CAUTION: The options must be factory fitted. (Exception: Scool-700 cooler)

### Second line of gas

This second gas line allows control from the generator of **your internal inerting** and / or dual gas management of the welding torch.

- Gas savings
- Welding process safety



### WIFI

This option includes a built-in **Wifi antenna** in the station.

The operating distance is 20-30 m depending on the environment.

We have authorized remote control via a smartphone or tablet. In fact, one application provides access to all functions, including programming.



### Wire feed

This option includes the axis board and the connectors. It must be completed by the dispenser (see accessories).

The Axxair welding generator makes it possible to use the **step mode** and to **synchronize the wire feed** with the current pulse

### WATER cooler

Removable cooler without tools with a cooling capacity of **700W** with a flow safety sensor. It is essential to use in all water cooled machines.

- Increasing the duty cycle



Join **experience**



# SAXX-200

## Technical characteristics

### Duty cycle:

230 V		110 V	
25 %	200 A	35 %	140 A
60 %	140 A	60 %	115 A
100 %	115 A	100 %	100 A

### Power supply:

- Single phase network **with earth**
- Supply voltage: 110 to 230 V +/-15%
- Input current consumed 23A at 230V and 32A at 110V
- Frequency: 50/60Hz
- Cable supplied: HO7RN-F 3x2.5 mm<sup>2</sup> black, length 3m

**NEW** This equipment comes with a 16A plug of type CEE7 / 7 to be connected to a socket protected by a 16A fuse or circuit breaker.

To allow use at maximum conditions or according to the country, it will be necessary to change the setting.

The nameplate of the equipment will allow you to choose the socket and the protection (fuse and / or circuit breaker) adapted to the conditions of use (voltage and current).

### Gas supply:

- Maximum inlet pressure: 5 bars
- Maximum flow rate: 50 l / min per gas line
- Inlet connectors: M12x100 male
- Outlet connectors: female blanking union Series 20

### Technology:

- Colour touch screen 5.7"
- 13 languages
- Up to 16 users with passwords and custom permissions
- Simple and intuitive programming with automatic parameter calculation and programming
- 200 programs in 20 sectors maximum / key



The ergonomic shape of the power source, the water cooler and the carrying handle make transport easy

**AXXAIR**  
INNOVATIVE ORBITAL SOLUTIONS

### Intelligence:

- Alarms: More than 30 alarms to protect the system and check that welding is normal.
- Welding voltage measured in increments of 0.1 A
- Minimum pulse time of 50 ms

### Auxiliary connector:

- Possibility of triggering the welding start via an oxygen meter (dry contact)

### Wi-fi: (Option)

Remote control of the screen on smartphone or tablet via an application  
Range: 20 to 30 m

### Cooling connector:

For SCOOOL-700 cooler only: It must be connected to the SAXX-200 to operate (No standalone operation)

- Max pressure: 5 bars
- Cooling power according to CEI60974-2 standard: 0.7 kW

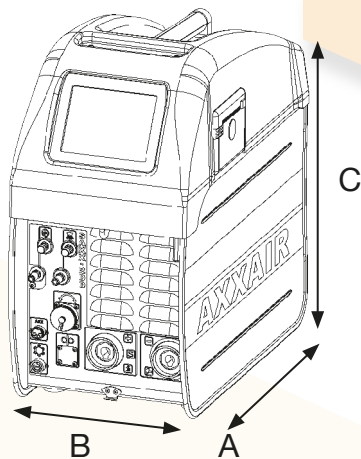
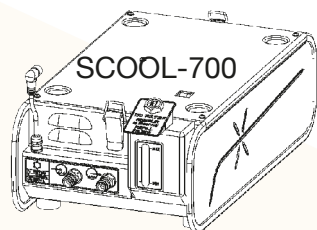
**CAUTION:** The power source is delivered without coolant. See "Consumables" to order the 3 liter can (SACW-C006).

### Integral printer:

- 32 characters / line
- Print program and actual parameters



# SAXX-200



Product code	Description	Cooled	Gas line	Second gas line	Wire feed	Wifi Antenna	Net weight	Dimensions AxBxC (in mm)
SAXX-200	Orbital TIG welding power source, 200A, autoline	AIR	x				21 kg	468 x 249 x 146
SAXX-200I		AIR	x			x	21 kg	
SAXX-200W		AIR	x		x		21 kg	
SAXX-200DG		AIR	x	x			21 kg	
SAXX-200IW		AIR	x		x	x	21 kg	
SAXX-200DGI		AIR	x	x		x	21 kg	
SAXX-200DGW		AIR	x	x	x		21 kg	
SAXX-200DGIW		AIR	x	x	x	x	21 kg	
SCOOL-700	Water cooler (700W)	Water	Essential to the use of all water cooled machines Compatible with all SAXX models listed above				8 kg	

All options must be mounted at AXXAIR.

